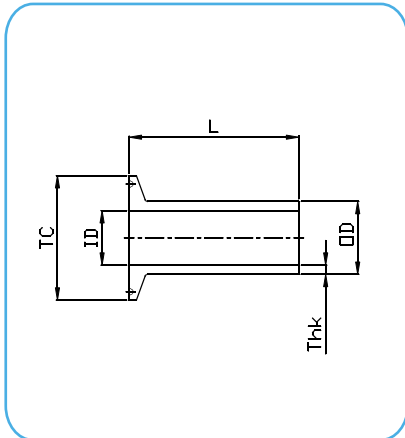


14MPW - 14WLMP Ferrule Clamp



**14MPW
HEAVY FERRULE CLAMP**

CODE	Size inch	ØTC (mm)	OD X Thk (mm)	ID (mm)	L (mm)
14MPW-A050-076-14A-A	1/2"	25	15 x 2.8	9.4	76.2
14MPW-A075-076-14A-A	3/4"	25	21.35 x 2.8	15.75	76.2
14MPW-A100-076-14A-A	1"	50.5	29.5 x 3.7	22.1	76.2
14MPW-A150-076-14A-A	1 1/2"	50.5	42.6 x 3.9	34.8	76.2
14MPW-A200-076-14A-A	2"	64	55.7 x 4.1	47.5	76.2
14MPW-A250-076-14A-A	2 1/2"	77.5	68.8 x 4.3	60.2	76.2
14MPW-A300-101-14A-A	3"	91	81.9 x 4.5	72.9	101.6
14MPW-A400-101-14A-A	4"	119	107.9 x 5.25	97.4	101.6
14MPW-A600-101-14A-A	6"	167	158.8 x 6.0	146.8	101.6

Certified PED 2014/68/EU - Design Pressure (PS): 10 barg

Technical Information:

Tri-Clamp Connection: according to ASME BPE

BW Connection: high thickness

Material: AISI 316L – 1.4404

Internal Surface Finish: Ra<=0.5µm → code **13** e.g.: 14MPW-A050-**13A**

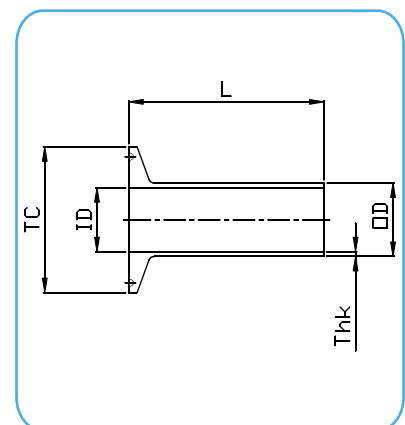
Technical Information:

Tri-Clamp Connection: according to ASME BPE

Material: AISI 316L – 1.4404

Internal Surface Finish: Ra<=0.5µm → code **13** e.g.: 14WLMP-A050-**13A**

CODE	Size inch	ØTC (mm)	OD X Thk (mm)	ID (mm)	L (mm)
14WLMP-A050-13A	1/2"	25	12.7 x 1.65	9.4	76.2
14WLMP-A075-13A	3/4"	25	19.05 x 1.65	15.75	76.2
14WLMP-A100-13A	1"	50.5	25.4 x 1.65	22.1	76.2
14WLMP-A150-13A	1 1/2"	50.5	38.1 x 1.65	34.8	76.2
14WLMP-A200-13A	2"	64	50.8 x 1.65	47.5	76.2
14WLMP-A250-13A	2 1/2"	77.5	63.5 x 1.65	60.2	76.2
14WLMP-A300-13A	3"	91	76.2 x 1.65	72.9	101.6
14WLMP-A400-13A	4"	119	101.6 x 2.10	97.4	101.6
14WLMP-A600-13A	6"	167	152.4 x 2.80	146.8	101.6



**14WLMP
LONG FERRULE CLAMP**

DATASHEETS



Last updates can be found on our website - www.aerreinox.it
In the interests of development of the product, we reserve the right to change the specifications without prior notice